

A photograph of a person in a dark jacket walking down a set of stairs. The stairs have a wooden handrail. The background shows a modern building interior with concrete walls and a yellow door. A large blue and purple circular graphic is overlaid on the left side of the image.

Going to secondary school in the BOVO Haaglanden region

For parents of children transitioning from primary to secondary school.

2024-2025

A big step

Your child will be going to secondary school next year. You will look for a suitable secondary school together and register your child. The primary school will help you with this important transition. This leaflet lists the steps.

School recommendation, educational report

It is important that your child goes to a school that's the right fit. In grade 8, your child receives the primary school recommendation. This indicates the level at which your child can attend secondary school. The primary school also draws up an educational report for each child. This report states what your child can do well and what he or she needs in the secondary school. You have the right to inspect this report and, if you wish, to add your opinion.

Note: different application periods

- **Eerste Opvang Anderstaligen – EOA or ISK:** (First admission for foreign language speakers) for children who have been in the Netherlands for less than two years. More information can be found on scholenwijzer.denhaag.nl.
- **Kopklas:** (literally 'Head class') children with a Kopklas recommendation can apply from 1 October through 1 December. If there is still room, you can also apply later in the year. For information and the application and admission procedure, visit www.haagsekopklas.nl.
- **Vso:** (special secondary education) for children with a vso recommendation, the application information can be found on the website of the vso school.



Priority rules

Many schools use priority rules if they have too many applications. Your child may be given priority in the following cases:

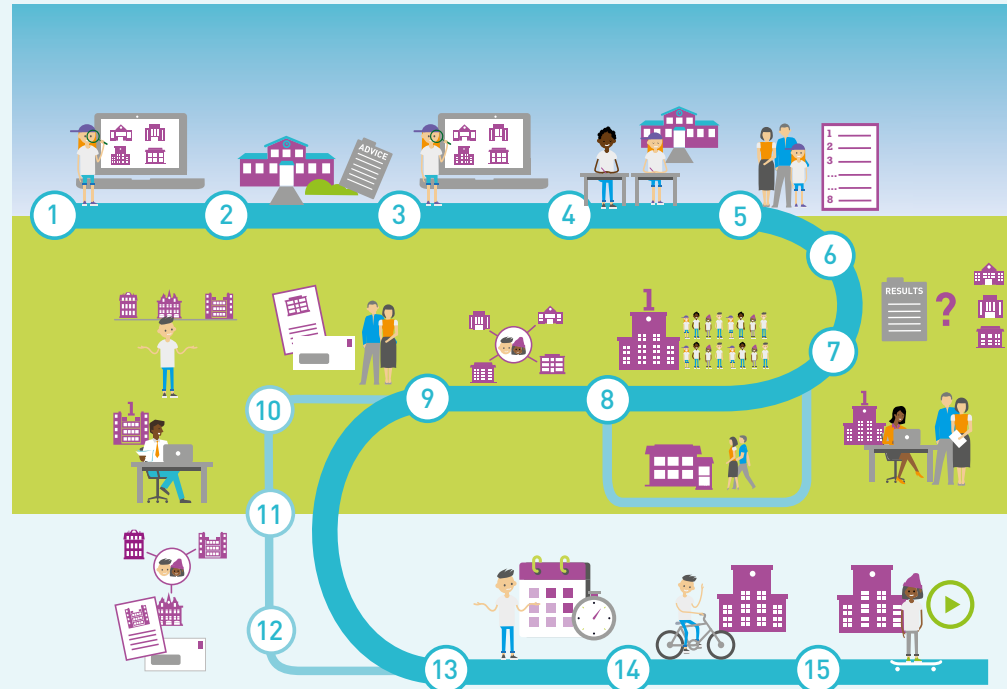
1. Priority for pupils with a (half-, step-) brother/sister at the preferred school;
2. Priority for children of staff from the preferred school;
3. Priority for pupils from primary schools with the same educational concept:
 - a. Montessori secondary schools may give priority to students from Montessori primary schools and to students from Dalton primary schools.
 - b. Dalton secondary schools may give priority to students from Dalton primary schools and/or to students from Montessori primary schools.
 - c. The secondary Free School may give priority to students from the (primary) Free Schools.

Schools decide for themselves which priority rules they apply and publish them via their own websites and on scholenwijzer.denhaag.nl.

Please note that
priority rules apply
only in the first round
and only to the school
of first choice!

Applying for secondary school

Important steps for registering your child in the 2024-2025 school year:



Step 1

Between autumn and Christmas holidays
Together with your child, you already look at secondary schools in the region. You visit an information session at the primary school and your child attends a trial lesson, for example. You can find information about the transition and an overview of all open days on: scholenwijzer.denhaag.nl.

Step 2

10 to 31 January
Your child will receive a provisional primary school recommendation with a list of fitting schools (the orientation form) from the primary school by 31 January. You discuss with your child which secondary schools to attend. Please note: admission requirements apply for some first-year classes, like top sport talent and bilingual education.

Step 3-5

6 January to 25 February 2024 and 27 January to 15 February and 17 February to 15 March
The open days at secondary schools are divided into three periods - one before the transfer test (doorstroomtoets), one during the transfer test (now only on Saturdays), and one after the transfer test. Together with your child, you make a list of favourite schools. Important advice for the minimum number of different schools you will later fill in on the preference list:

4 schools – Practical education, the various forms of preparatory secondary vocational education ('vmbo'): vmbo bl, vmbo bl through kl, vmbo kl, vmbo kl through tl and vmbo gl-tl (vmbo with and without extra support 'lwoo'),

6 schools – vmbo gl-tl through havo, and havo (senior secondary general education)

8 schools – havo through vwo, and vwo (pre-university secondary education)

As the transfer test may still have an effect on the provisional recommendation, we advise a broad orientation on the schools during open days. Your primary school can help in this.

Tip: fill in more schools rather than less. This will increase the chances of placement at one of the schools.

Please note that you can attend open days and/or introductory interviews at practical schools as early as 1 November.

Step 4+6

27 January to 14 February 15 to 24 March

Between 27 January and 14 February, your child will take the transfer test. The results of the transfer test will be known by 15 March at the latest. If the result of the transfer test is higher than the provisional primary school recommendation, the primary school will reconsider the recommendation. The primary school can decide to leave the recommendation as it was or to raise it. Lowering the recommendation is not possible. No later than 24 March, you will receive the final school recommendation with which you may register your child.

Step 7

18 to 31 March

In the Haaglanden region, all pupils, except pupils with a practical education recommendation, apply digitally. You can fill in the application form and preference list in the OT (Onderwijs Transparant) application and register your child this way. You will

Step 8

April and May

First-choice schools place as many pupils as possible. Priority children are placed first. If a school receives more applications than places, it may have to draw lots. If there is no place at the first school on the preference list, your child receives a lottery number and a central system of drawing lots and matching starts. Based on the order of lottery numbers, we will see if your child can get a place at the school as high as possible on the preferred list.

Step 10-12

16 May to 3 June

Does your child not have a place by 13 May? Then check, from 16 May after 17.00, where there are still places on: scholenwijzer.denhaag.nl. Your primary school will give you a new preference list with schools that still have a place. Between 20 and 23 May, you can re-register your child digitally at a school that still has a place. Your child will immediately receive a lottery number for a second central draw and matching. On 3 June, you will receive a message from BOVO after 15:00. You will also receive a message from the secondary school about your child's placement.

Step 13

11 June to summer

In the remaining period, all children who do not yet have a place can find one through the live overview of capacity published on scholenwijzer.denhaag.nl.

Step 14

7 to 18 July

In July, the introduction to the new school generally takes place.

Step 15

1 September

Your child starts secondary school.

Note:
With more schools on the preferred list, the chances of getting a place at one of those schools are higher!
.....
Don't forget to register your child between 18 and 31 March!

Step 9

13 May

On 13 May 2025, from 17.00, you will hear from BOVO whether your child has a place at one of the schools on the preference list. In addition, you will receive a notification from the secondary school on 13 May (from 17.00) or 14 May. You can choose to receive the message from BOVO by email or view the message in the OT application (Onderwijs Transparant). If you choose neither, you will only receive notification from the secondary school. You can sign up for BOVO's notification through the primary school.

Please note: if you have any questions about admission or the non-admission following the drawing of lots, please contact the primary school in the first instance. If you have questions about the procedure, please contact BOVO Haaglanden.



More information

The primary school can tell you more about the transition to secondary school. Information about the transition is included in the primary school's school guide.

BOVO Haaglanden

In the municipalities of The Hague, Leidschendam-Voorburg and Rijswijk, the transition from primary school to secondary school is regulated through the BOVO procedure. This procedure stems from agreements made between the school boards in these municipalities. The organisation BOVO Haaglanden carries out the procedure and offers support to primary and secondary schools. More information about the procedure can be found on www.bovohaaglanden.nl.

Admission decisions

After the first round, all parents will receive notification of admission to a school on 13 May. A large percentage of all pupils (over 98% on average) are admitted to a preferred school in this first round. In a very few cases, your child may miss out on all the schools on the preference list. This chance is small, but it does exist. If this is the case, the primary school will contact you.

Parent information point

Your first point of contact for questions about the transition is your primary school. After admission, it is the secondary school. Answers to specific questions about the process can be found on www.bovohaaglanden.nl. Should you not find an answer for your question here, you can contact BOVO Haaglanden via ouderinformatiepunt@bovohaaglanden.nl. Shortly after the announcement of admission decisions, the parent information point can also be contacted by phone. You can contact the parent information point for questions about your child's secondary school admission and on how to proceed.

Complaints procedure ('Ombudsregeling')

If you have a complaint about the way the BOVO procedure was carried out by the primary or secondary school, you can make use of the parent's ombudsman scheme. After submitting your complaint, an independent complaints committee will deal with it.

For a complaint about the primary school recommendation, the content of the educational report or about your child's admission decision, go to the school's management or board.

For more information on the ombudsman scheme and contact details and opening hours of the parent information point, visit <https://www.bovohaaglanden.nl/toelaten/contact-vragen-en-klachten-ouders/>



Colophon

Text Team BOVO Haaglanden
Photography Roos Koole
Design Haagsblauw
Infographic Buro Marmelade
Issue BOVO Haaglanden, School year 2024-2025