

A photograph of a school hallway with rows of lockers on both sides. The lockers are light-colored with dark handles. In the background, there are posters on the wall and a doorway leading to another area. A large blue semi-transparent circle is overlaid on the left side of the image, containing the main title text.

# Going to secondary school with tailored education in the BOVO Haaglanden region

For parents of children with additional support needs who are making the transition from primary to secondary school.

**2025-2026**

# A big step

Your child will be entering secondary school next year. The primary school will help you with this important step. Some pupils need extra support at school. This is called tailored education. Does your child need this support? Then look for a secondary school that can offer the right support. This leaflet lists the steps needed for the transition to secondary school.

## School recommendation, educational report

It is important that your child goes to a school that's the right fit. In grade 8, your child will receive the primary school recommendation. This indicates the level at which your child can enter secondary school. The primary school also draws up an educational report. This states what your child can do well and what he or she cannot do well, and what support your child will need at secondary school. You have the right to inspect this report and, if you wish, to add your opinion. You can also indicate yourself that your child needs extra support.

If your child has been recommended for practical education, an assessment of intelligence or social-emotional development is required. Your consent is required for most assessments. The primary school or a specialist will conduct this assessment. With your consent, the results will be included in the educational report.

## Support in education

With tailored education, every child can be educated at the school type that suits his or her level and talents. Sometimes a child is already receiving extra support in primary school. Sometimes extra support is not needed until secondary school. If your child comes from a school for special primary education or special education, he or she will (almost) always need support. In tailored education, there are three forms of support: basic, extra and in-depth support.

**1) Basic support** is offered in each secondary school in its own way. Tailored education starts with good basic support at the schools for all pupils. Basic support is described in the school support profile (sop) for which the schools themselves are responsible. For most pupils, basic support is sufficient. Examples include guidance from a mentor or support for dyslexia.

**2) Extra support** is meant for pupils who need more than basic support. This is called extra support. This is provided in the child's own school as far as possible. A development perspective (opp) is drawn up at your child's school. This is required by law. The school is responsible for organising the support. Additional resources are available for this purpose and these are provided by the the South Holland West Collaboration (SWVZHW, *Samenwerkingsverband Zuid-Holland West*) (refer to: [www.swvzhw.nl](http://www.swvzhw.nl)). Practical education also falls under extra support..

**Please note:** if your child has received extra support at primary school, in the form of an individual arrangement, ask about the possibilities at secondary school. Extra support is organised differently there.

**3) In-depth support.** If the extra support proves insufficient, it may be determined in consultation between parents/carers, the school and the SWVZHW Partnership that special support or a referral to secondary special education (vso) is needed. Children at vso receive in-depth support. This could involve additional guidance, specific resources, adapted teaching materials, or a different learning environment. It is support that a regular secondary school can't offer.

## Priority rules

Many schools apply priority rules if they have too many applications. These rules include:

1. Priority for pupils with a (half-, step-) brother/sister at the preferred school;
2. Priority for children of staff from the preferred school;
3. Priority for pupils from primary schools with the same educational concept:
  - a. Montessori secondary schools may give priority to students from Montessori primary schools and to students from Dalton primary schools.
  - b. Dalton secondary schools may give priority to students from Dalton primary schools and/or to students from Montessori primary schools.
  - c. The secondary Free School may give priority to students from the (primary) Free Schools.

Schools decide for themselves which priority rules they apply and announce them via their own websites and on [scholenwijzer.denhaag.nl](http://scholenwijzer.denhaag.nl).

**Please note that**  
priority rules apply  
only in the first round  
and only to the school  
of first choice!

# Registering for extra support within practical education, vmbo, havo and vwo

Important steps for enrolling your child in the 2025-2026 school year.

**Please note:** In order to start a tailor-made programme for a pupil with additional support needs, parental consent is required to share data with secondary school experts prior to enrolment. Help cannot be provided without this consent.

Step 1

## Between the autumn and Christmas holidays

Together with your child, you already look at secondary schools in the region. You visit an information session at the primary school and your child attends a trial lesson, for example. You can find information about the transition and an overview of all open days at: [scholenwijzer.denhaag.nl](https://scholenwijzer.denhaag.nl).

Step 2

## 10 to 31 January

Your child will receive a preliminary primary school recommendation from the primary school with a list of fitting schools (the orientation form) by 31 January. You discuss with your child which secondary schools to attend. Please note: sometimes admission requirements apply for some first-year classes, like top sport talent and bilingual education.

The primary school and/or yourself indicate whether your child needs more support at secondary school than basic support.

Step 3-5

## 5 January to 24 January 26 January to 14 February and 23 February to 14 March

The open days at secondary schools are divided into three periods - one before the transfer test (doorstroomtoets), one during the transfer test (now only on Saturdays), and one after the transfer test. Together with your child, you make a list of favourite schools.

Important advice for the minimum number of different schools you will later fill in on the preference list:

**4 schools – Practical education, the various forms of preparatory secondary vocational education ('vmbo'):** vmbo bb, vmbo bb through kb, vmbo kb, vmbo kb through gl-tl and vmbo gl-tl

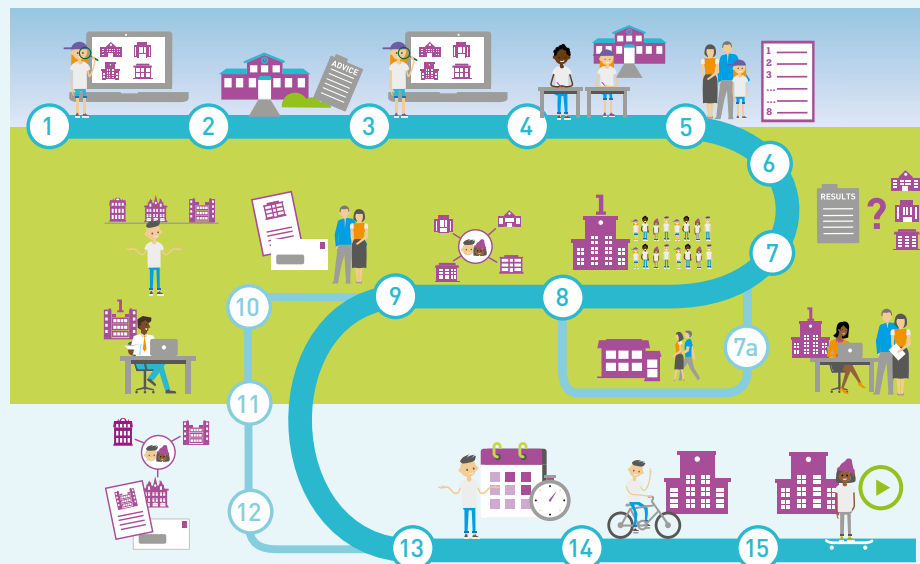
**6 schools – vmbo gl-tl through havo, and havo (senior secondary general education)**

**8 schools – havo through vwo, and vwo (pre-university secondary education)**

Because the provisional recommendation can still change based on the results of the transfer test, it is wise to do broad orientation at schools during open days. Your primary school can help you with this.

Tip: fill in more rather than less. This will increase the chances of placement at one of the schools.

**Please note that you can attend open days and/or introductory interviews at practical schools as early as 1 November.**



Step 4+6

## 26 January to 13 February 15 to 24 March

Between 26 January and 13 February, your child will take the transfer test. The results of the transfer test will be known by 15 March at the latest. If the result of the transfer test is higher than the provisional school recommendation, the primary school will reconsider the recommendation. The primary school can decide to leave the recommendation as it was or to raise it. Lowering the recommendation is not possible. No later than 24 March, you will receive the final school recommendation with which you may register your child.

Step 7

## 18 to 31 March

In the Haaglanden region, all pupils, except those with a recommendation for practical education, apply digitally. You can fill in the application form and preference list in the OT application (Onderwijs Transparant) and enrol your child in this way. You will receive more information about digital enrolment from the primary school. Through this digital registration, your child is registered with all schools on the preference list. In the Haaglanden region, there is no placement guarantee, even if you follow the recommendation of the number of schools to be filled in on the preference list.

After registration, the secondary school will review your child's educational report. Subsequently, the school will determine whether they can provide the additional support your child needs. The school may request additional information from you and the primary school for this purpose.

Step 7a

## Duty of care

If your first-choice school cannot provide the necessary support, it cannot admit your child. However, it does have a duty of care, meaning the school must find another place for your child. You will then receive a letter from the school explaining why your child has not been admitted. The school will then consider the other schools on your preference list. Sometimes it is necessary for your child to attend a school that is not on your preference list. This will always be discussed with you. Employees of the South Holland West Collaboration (SWVZHW, Samenwerkingsverband Zuid-Holland West) will support you and your first-choice secondary school in this process.

## Note:

With more schools on the preferred list, the chances of getting a place at one of those schools are higher!

Don't forget to register your child between 18 and 31 March!

Step 8

## April and May

First-choice schools place as many pupils as possible. Priority children for the school at the top of the preference list are placed first. If a school receives more applications than places, it may have to draw lots. If there is no place at the first school on the preference list, your child receives a lottery number and a central system of drawing lots and matching starts. Based on the order of lottery numbers, we will see if your child can get a place at the school as high as possible on the preferred list.

Step 9

## 13 May

On 13 May 2026, after 17.00, it is possible for you to see whether your child has a place at one of the schools on the preference list. In addition, you will receive notification about placement from the secondary school. You can also contact BOVO's parent information point by phone after 18.00.

**Please note:** if you have any questions about admission or the non-admission following the drawing of lots, please contact the primary school in the first instance. If you have questions about the procedure, please contact BOVO Haaglanden.

Step 10-12

## 20 May to 9 June

In the exceptional case that your child does not have a place on 13 May, you can check where there are still places available from May 18, after 17.00, at: [scholenwijzer.denhaag.nl](https://scholenwijzer.denhaag.nl). Between 20 and 26 May, you can re-register your child digitally at schools that still have places in the second admission round.

A new central draw and matching process will take place. After 15.00 on 3 June, you can see if your child has been accepted into one of the schools on the new preference list. You will also receive a message from the secondary school about your child's placement.

Step 13

## 10 June to summer

During the remaining period, please visit [scholenwijzer.denhaag.nl](https://scholenwijzer.denhaag.nl) to see which schools still have places available. Registration during this period is possible directly with the secondary school.

Step 14

## 15 June to 10 July

During these weeks, the introduction to the new school generally takes place.

Step 15

## 1 September

Your child starts secondary school.



### Enrolling in secondary special education (vso)

A different application procedure applies to children with a vso recommendation. This differs per school and can be found on the vso school's website. It is often possible to enrol earlier. Your child does need an admissibility statement for vso.

### Funding extra support

A school needs money to provide a child with the extra support he or she needs. This funding is slightly different in secondary education than in primary school. At primary school, the school applies for a separate arrangement for each child and receives money for it. The secondary school receives money from the SWVZHW Partnership to arrange the extra support for all children who need it.

### More information

The primary school can tell you more about the transition to secondary school. Information about the transition is included in the primary school's school guide.e.



### BOVO Haaglanden

In the municipalities of The Hague, Leidschendam-Voorburg and Rijswijk, the transfer from primary school to secondary school is regulated through the BOVO procedure. This procedure stems from agreements made between the school boards in these municipalities. The organisation BOVO Haaglanden carries out the procedure and offers support to primary and secondary schools. More information about the procedure can be found on [www.bovohaaglanden.nl](http://www.bovohaaglanden.nl).

### Admission decisions

After the first round, all parents will receive notification of admission to a school on 13 May. A large percentage of all pupils (over 98% on average) are admitted to a preferred school in this first round. In a very few cases, your child may miss out on all the schools on the preference list. This chance is small, but it does exist. If this is the case, the primary school will contact you.

### Parent information point

Your first point of contact for questions about the transition is your primary school. After admission, it is the secondary school. Answers to specific questions about the process can be found on [www.bovohaaglanden.nl](http://www.bovohaaglanden.nl).

Should you not find an answer for your question here, you can contact BOVO Haaglanden via [ouderinformatiepunt@bovohaaglanden.nl](mailto:ouderinformatiepunt@bovohaaglanden.nl).

Shortly after the announcement of admission decisions, the parent information point can also be contacted by phone.

You can contact the parent information point for questions about your child's secondary school admission and on how to proceed.

### Ombudsman scheme

If you have a complaint about the way the BOVO procedure was carried out by the primary or secondary school, you can make use of the ombudsman scheme. After submitting your complaint, an independent complaints committee will deal with it.

For a complaint about the primary school recommendation, the content of the educational report or about your child's admission decision, go to the school's management or board.

For more information on the ombudsman scheme and contact details and opening hours of the parent information point, visit <https://www.bovohaaglanden.nl/toelaten/contact-vragen-en-klachten-ouders/>

### Colophon

Text Team BOVO Haaglanden

Photography Roos Koole

Design Haagsblauw

Infographic Buro Marmelade

Issue BOVO Haaglanden, School year 2025-2026