

A group of diverse secondary school students are walking through a school hallway. They are smiling and looking towards the camera. The hallway has yellow lockers in the background. A large purple semi-transparent shape is overlaid on the image, containing the main title and subtitle.

Moving on to secondary school with special education in the BOVO region Haaglanden

For parents of children who are going to make the transition from primary school to secondary school.

2022-2023

A big step

Your child is going to secondary school next year. The primary school will help you with this important step. Some pupils need extra support at school. This is referred to as special education. Does your child need this kind of support? Then look for a secondary school which can offer the right support. This leaflet tells you about the steps you need to take for the transition to secondary school.

School recommendation, educational report

It is important that your child goes to a school that is suitable for them. In year 8 your child receives the primary school recommendation. This tells you the level at which your child can enter secondary school. The primary school also draws up an educational report for each child. This states what your child is good at and less good at, and what support they need at the secondary school. You have a right to inspect this report and, if you wish, to have your opinion added as a separate appendix. You can also state that your child needs extra support.

If a child has a school recommendation for practice-oriented education or learning support, their learning difficulties, intelligence or social-emotional development will need to be investigated. Your consent is usually required for these investigations. The primary school or an expert carries out the investigation. With your consent, the result is included in the educational report.

Support in education

Within special education, every child can receive their education at the type of school that is suitable for their level and talents. Sometimes children need extra support at primary school. Sometimes they only need it when they start secondary school. If your child comes from a school for special primary education or special education, they will (almost) always need support. Within special education there are three forms of support: basic, extra and intensive support.

- 1) **Basic support** is offered at every secondary school in their own way. Examples are counseling by a mentor or support with dyslexia.
- 2) **Extra support** is intended for pupils who need more than basic support. The support offered varies per school and is described in the school support profile (see: www.swvzhw.nl). Practice-oriented education and learning support in vmbo (pre-vocational secondary education) fall under this as well.
NB: if your child had extra support at primary school in the form of an individual arrangement, ask about the options at secondary school. Extra support is organised differently there.
- 3) **Intensive support** is offered in secondary special education (vso) and is intended for pupils who need very intensive supervision.



Priority rules

Many schools apply priority rules if they have too many applications. Your child may be given priority if:

- 1) a (half or step) brother or (half or step) sister is already at the school of first choice;
- 2) one of the parents works at the school of first choice;
- 3) if the primary school has the same educational concept:
 - a. the secondary Montessori schools can give priority to pupils from Montessori primary schools and pupils from Dalton primary schools.
 - b. the secondary Dalton schools can give priority to pupils from Dalton primary schools and pupils from Montessori primary schools.
 - c. the secondary "Vrije School" (Steiner school) may give priority to pupils of primary "Vrije" schools.

Schools decide for themselves which priority rules they apply, and make these known via their own website, and on scholenwijzer.denhaag.nl.

NB: the priority rules only apply during the first round and only for the school of first choice!

Registering for extra support within practice-oriented education, pre-vocational secondary education, (with learning support (lwoo)), general secondary education and pre-university education

Important steps for the registration of your child:

Step 1

December 2022

No later than before the Christmas vacation, your child will receive a provisional primary school recommendation from the primary school, with an overview of suitable schools (the orientation form). You talk to your child about which secondary schools you are going to visit. The primary school and/or you indicate whether your child needs more support at secondary school than the basic support.

Step 2

9 January to 10 February 2023

After the Christmas vacation there are open days at the secondary schools. For more information about this, visit the school's website.

> There will be an extra period of open days between 10 October and 5 November. More information on this at: scholenvijzer.denhaag.nl/vo/open-dagen

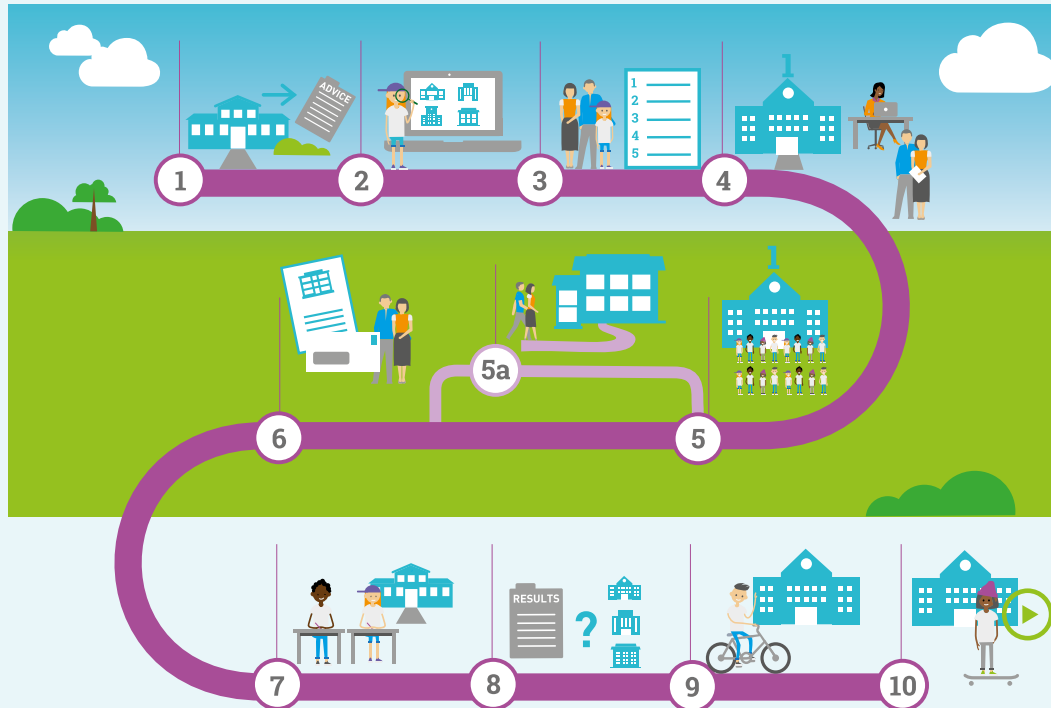
Before application starts, you will receive the school recommendation and the application form; or you can register for digital application at the primary school.

Step 3+4

11 to 24 February 2023

Together with your child, you draw up a list of 6 favourite schools. Tip: it's better to fill in more schools than fewer. That increases the chance of gaining a place at one of those schools. You deliver the application form with the preference list to your school of first choice. Your child is then registered with all the schools on the preference list.

If the primary school takes part in digital registration, you can fill in the application form and the preference list via the website of Onderwijs Transparant (OT) and register your child this way. You can obtain more information about digital registration from the primary school.



Step 5

11 February to 5 April 2023

The secondary school looks at your child's educational report. Then the school investigates whether it can offer the extra support that your child needs. The school may request additional information for this, either from you and/or from the primary school. If the school has received too many applications, then it may apply priority rules and allocate places by lot (for information about the priority rules, see page 2).

Step 5a

Duty of care

If your first choice of school cannot offer the right support, then the school cannot admit your child, but it does have a duty of care. This means that the school has to find another place for your child. You will receive a letter from the school explaining why your child cannot be admitted. In addition, if places are allocated by lot and your child is not allotted a place, the school will look for another place for your child. They will look to the other schools on your preference list first. Sometimes it is necessary for your child to go to a school that is not on the preference list. This will always be discussed with you. Employees of the South Holland West Collaboration (SWVZHW) will assist you and the secondary school of first choice in this matter.

Step 6

5 April 2023

On 5 April 2023, between 3 and 5 pm, you will hear from BOVO whether your child has a place at one of the schools on the preference list. If you applied your child digitally you can log on the website again to see the message in the OT website. Otherwise you can receive an email. You will also receive a message from the secondary school on 5 April (after 3 pm) or on 6 April. If you don't want a message from BOVO, you will only receive the message from the secondary school. Ask the primary school for more information about the BOVO message.

NB: if you have any questions about the message, or if your child has unfortunately not been allotted a place, you can contact the parent's help desk (see the rear of this leaflet).

Step 7-8

April/May 2023

Your child will participate in the final test in April/May. If the result of the final test is higher than the primary school recommendation, the primary school will reassess the recommendation. The primary school may decide to leave the recommendation as it was or to increase it. If the school now issues a higher recommendation, your child may stay in the same class, transfer to a different class, or you may opt for a different school if there is still a place there. It is not possible for the recommendation to be lowered.

Step 9

July 2023

In July the introductory session takes place at the new school.

Step 10

21 August 2023

Your child starts at the secondary school.

NB: With 6 or more schools on the preference list the chance of a place at one of those schools is higher!
.....
Don't forget to register your child in the period from 12 to 25 February! The next opportunity is not until 11 to 14 April. Some secondary schools are already full by then (for more information about this, see the leaflet Moving on to secondary school 2021-2022)

Registering for secondary special education (vso)

A different registration procedure applies in the case of children with a vso recommendation. This varies per school and you will find it on the website of the vso school. It is often possible to register earlier. However, your child does need a declaration of eligibility for admission for vso.

Time limit for processing

From when you register your child, the secondary school has 8 weeks to investigate whether it can offer your child the help they need. So, you will receive a message on 5 April (see step 6). Very occasionally the school needs extra time. Then the school can extend this deadline by a maximum of 2 weeks.

Finance for extra support

A school needs extra money in order to be able to offer a child the extra support he or she needs. The financing for this in secondary education is arranged differently from primary education. In primary education, the school requests a separate arrangement for each child and receives money for this. Secondary schools receive extra money from the Partnership for South-Holland West in order to provide the extra support for all the children that need it.



More information

The primary school can tell you more about moving on to secondary school. You can also find information on: scholenwijzer.denhaag.nl, www.bovohaaglanden.nl/voor-ouders and on the websites of the primary schools and the secondary schools. Would you like to know what support a secondary school offers? The school support profile (SOP) describes the support that a school can and cannot offer. You will find this on the school's website or on www.swvzhw.nl. Information about special education can be found on www.passendonderwijs.nl.

BOVO Haaglanden

In the municipalities of The Hague, Leidschendam-Voorburg and Rijswijk the transition from primary school to secondary school is governed by the BOVO procedure. This procedure results from agreements that the school directors in these municipalities have made with each other. The organisation BOVO Haaglanden implements the procedure and offers support to primary schools and secondary schools. For more information, visit www.bovohaaglanden.nl/over-bovo.

Complaints procedure ('Ombudsregeling')

If you have a complaint about the way in which the BOVO procedure is implemented by the primary school or secondary school you can make use of the complaints procedure for parents. After your complaint has been submitted an independent complaints committee deals with the complaint. You will receive a response within 6 weeks. The school and the school's directors receive a recommendation from the committee.

If you have a complaint about the primary school recommendation, the content of the educational report, or about the admission decision for your child, you should address this to the directors or the management of the school.

You can find more information on www.bovohaaglanden.nl/voor-ouders.

Parent's help desk

A temporary parent's help desk is opened from 5 April (6 pm) and from 20 April 2023 (6 pm). You can put all your questions to the helpdesk concerning your child's admission to a secondary school and about the follow-up to the procedure. You will find the opening hours and contact details on www.bovohaaglanden.nl/voor-ouders.

Colophon

Text Team BOVO Haaglanden

Editorial Judith Lommel

Photography Fleur Beemster

Design Haagsblauw

Infographic Buro Marmelade

Publication BOVO Haaglanden, School year 2022-2023